



Livingston County Digital Divide Data

Table of Contents:

- Data on Computer & Internet Use in Livingston County
- Data on Internet Service Providers (ISP) in Livingston County
- Demographic Data
- Community Profile Maps

Data on Computer & Internet Use in Livingston County

	New York	Livingston County
Households with a computer	88.2%	89.0%
...with a desktop or laptop	78.8%	80.1%
...with a smartphone	74.5%	68.7%
...with a tablet or portable wireless computer	56.6%	54.0%
...with other	5.3%	2.8%
Households with a broadband internet subscription	80.9%	80.8%
...cellular data plan	54.3%	52.4%
...broadband such as cable, fiber optic, or DSL	72.2%	69.2%
...Satellite	3.4%	6.0%
...dial-up alone	0.4%	0.9%
...other service alone	0.2%	0.2%

Source: <https://www.census.gov/acs/www/data/data-tables-and-tools/narrative-profiles/2018/>

Data on Internet Service Providers (ISP) in Livingston County

Almost 99% of consumers in New York have access to a wired connection with true broadband speeds faster than 25 Mbps. The average download speed in New York is 104.71Mbps.

- There are 4 residential internet providers.
- The fastest speed available is 940Mbps. The average download speed is 34.93Mbps.
- The lowest starting price is \$27.99 /month for service at 6-90 Mbps from Frontier Communications.
- The highest starting price is \$59.99/month for service at 25Mbps from HughesNet.

Source: <https://broadbandnow.com>

Demographic Data

- 41% of children enrolled in public schools are eligible for free or reduced price lunch in Livingston County. Source: <https://www.countyhealthrankings.org/>

Key Demographics: Livingston County

	Livingston
Total population	63,907
Median household income	\$56,071 ± \$1,875
Population per sq/mi	101
Total households	24,383 ± 388
Households per sq/mi	39
Area (sq/mi)	631.8
Families in poverty	12.16% ± 2.06%
Proportion Persons of Color	6.59% ± 0.50%
Proportion Black or African American	2.82% ± 0.23%
Proportion Hispanic or Latino	3.48%
Proportion Native American	0.20% ± 0.11%
Proportion of workers who work from home	3.80% ± 0.59%

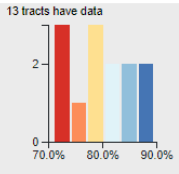
Source: <https://internet-is-infrastructure.org/>

Community Profile Maps

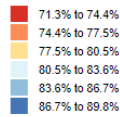
Internet Subscription Rates

About the data... This data is only available at the Census **tract** level.

With a Broadband subscription

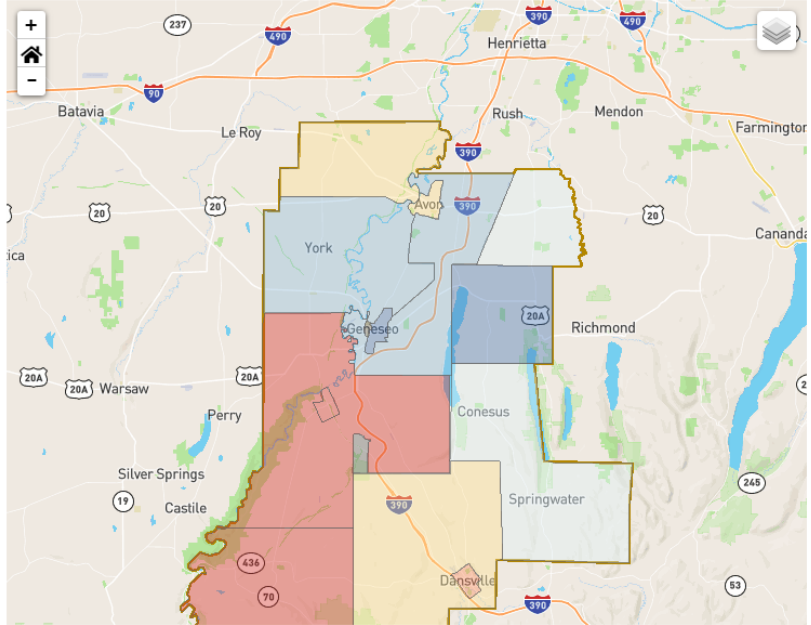


With broadband subscription



Range: 71.3% - 89.8%
2 tracts have no data provided.

Show additional demographics

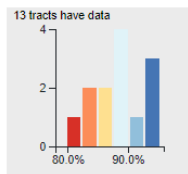


Computing Devices in the Home

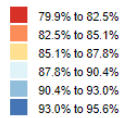
About the data... This data is only available at the Census **tract** level.

One or more devices

Percentages

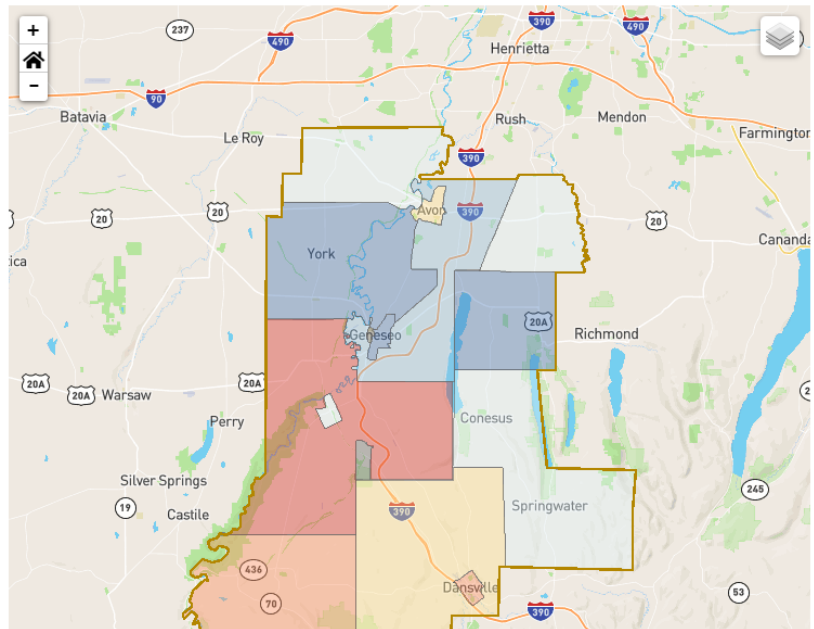


Households



Range: 79.9% - 95.6%
2 tracts have no data provided.

Show additional demographics



Source: <https://internet-is-infrastructure.org/>